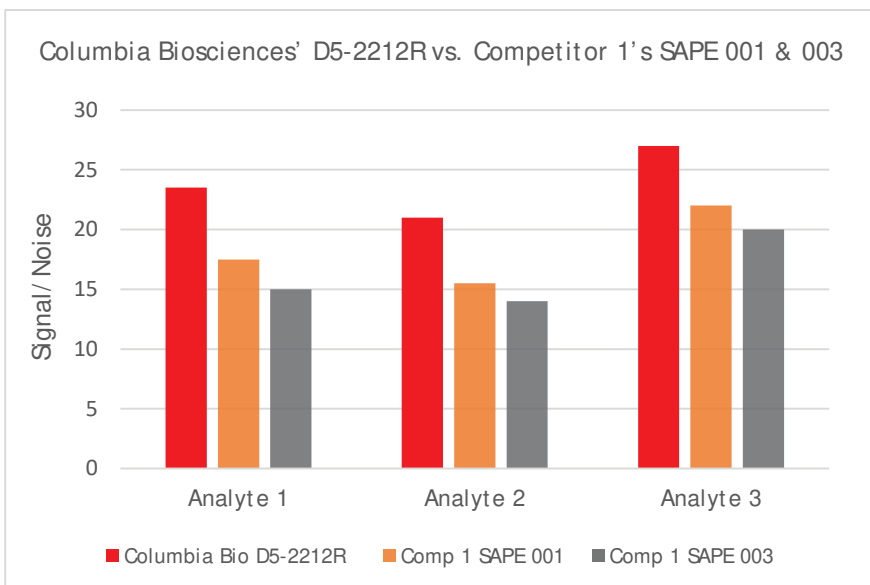


# SURELIGHT® SAPE - SUPERIOR PERFORMANCE AND STABILITY

Columbia Biosciences developed and sells two versions of its SureLight streptavidin-R-phycoerythrin (SAPE): a high-intensity and standard version. Both products are stable, well-defined and do not require stabilizers. Primary uses of these conjugates include immunoassays, flow cytometry and multiplexing platforms such as Luminex\*.

- The high-intensity polymeric product (D5-2212R) is suited for applications where small amounts of antigens are available.
- The standard-intensity product (D5-2212M) is more suitable for moderate sensitivity assays.

## SureLight® Polymeric SAPE (high-intensity)



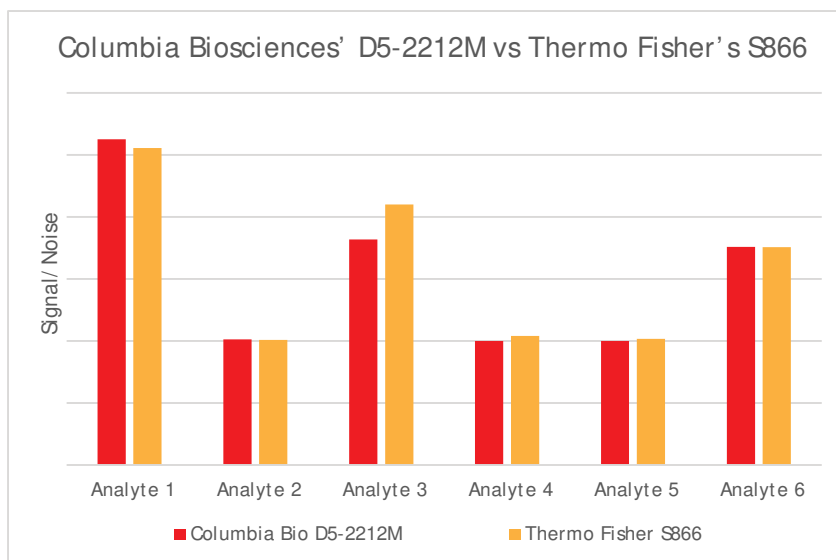
### Important Features of Columbia Biosciences' SureLight Polymeric SAPE (Cat# D5-2212R)

- 8-10x brighter than most SAPE conjugates
- 10-15% brighter and interchangeable with Competitor 1's SAPE 001 & 003
- 15-20nm hydrodynamic radius
- Two year shelf-life
- BSA-free
- Competitive bulk pricing

### Important Features of Columbia Biosciences' SureLight SAPE (D5-2212M)

- Interchangeable with Thermo Fisher's S866
- Minimal cross-reactivity between microspheres and conjugates
- Two year shelf-life
- BSA-free
- Competitive bulk pricing

## SureLight® SAPE (standard-intensity)



\*Luminex is a registered trademark of Luminex Corporation

### Contact Us to Discuss Pricing

- Sales inquiries: [sales@columbiabiosciences.com](mailto:sales@columbiabiosciences.com) • Technical inquiries: [info@columbiabiosciences.com](mailto:info@columbiabiosciences.com)
- phone: 301-732-5415 • [www.columbiabiosciences.com](http://www.columbiabiosciences.com) • Frederick, Maryland